

*Change new drawing frame in Blue Color since 2009/07/01 , to comply with Company CIS Policy.

Revisions

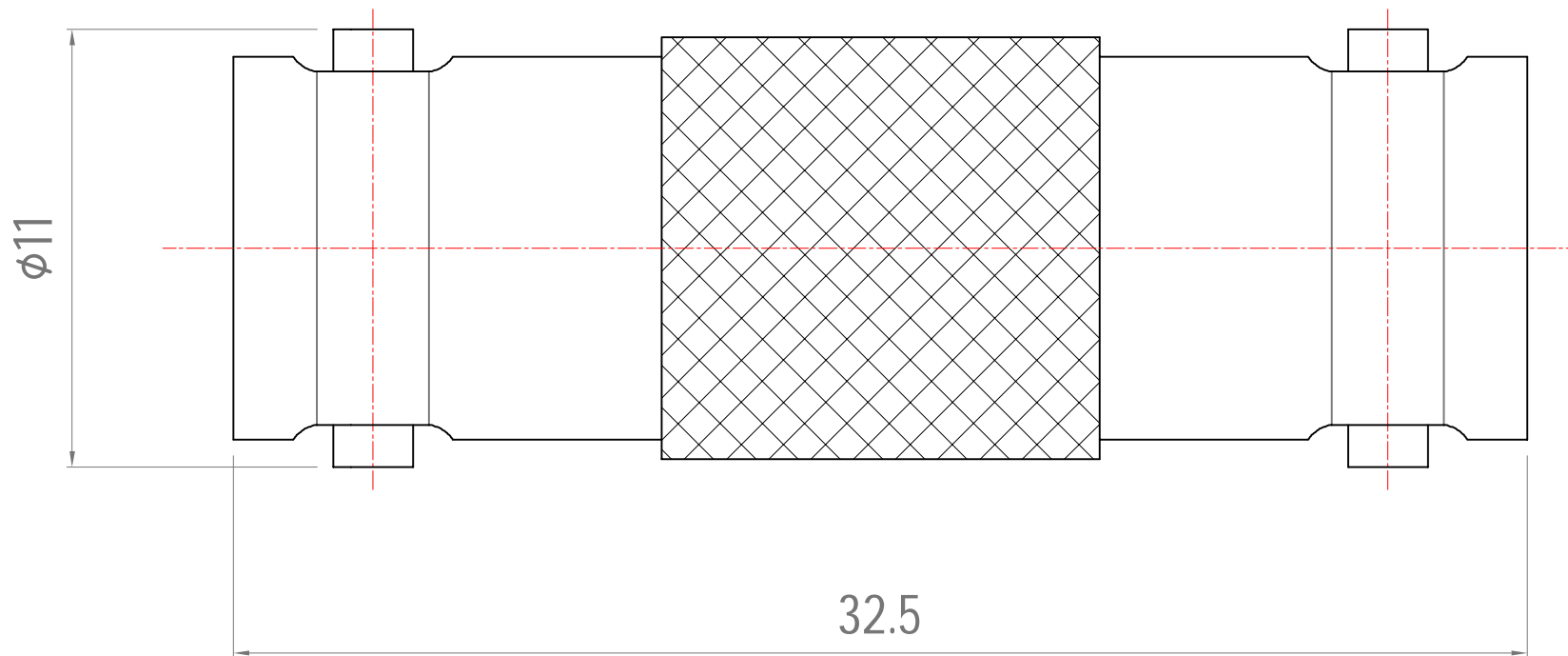
Note: Revisions B; B-1; B-2..... On Behalf of Official Drawing.
Revisions 1; 2; 3; 4..... On Behalf of Experiment's Drawing.

ISS	Symbol	Explanation	Date
B	△	Formal Drawing Released.	2019/05/13

Notes :

- Any Electrical, Mechanical or Environmental Test Per MIL-PRF-39012F Should be Spotlighted, as We May Not Have All Testing Equipment to Cover All of It.
- All Metal Materials Are in Compliance with RoHS 2 Directive 2011/65/EU Annex III Section 6 Paragraph.

Outline Drawing



Finish [Unit of Plating Thickness Is in Micro Inch (μ)]

- Nickel Plating Thk. : 80 μ" min. (Under Plating)
- Gold Plating Thk. : 2 μ" max. (Over Finish 1)

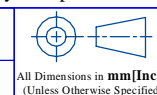
*RoHS and REACH are fully complied to create a greener planet for future generations.

ITEM	Description	Material	Finish	Part Number	QTY
5					
4					
3	Inner Contact	P. Bronze	Finish 1/2 (P)		
2	Insulator	Delrin	None		
1	Body	Brass	Finish 1		

Scale	Abbr.	Date	Rev.
NTS	ST	2019/05/13	B

Tolerances :
 .X ±0.2
 .XX ±0.1
 .XXX±0.05
 Angular :
 .X ±1°

Drawn: Amy
 Checked: Mark
 Approved: G. Sun
 2019/05/13 2019/05/13 2019/05/13



All Dimensions in mm[Inch]
(Unless Otherwise Specified)

DWG.NO.	Customer P/N:
AT104W2N07	
TITLE	BNC Jack to Jack Adaptor

TXT verified
 DIM verified
 Outline verified

