

FIF-9

Interface Unit

Service Manual

©2004 VERTEX STANDARD CO., LTD.

EAC95X90A

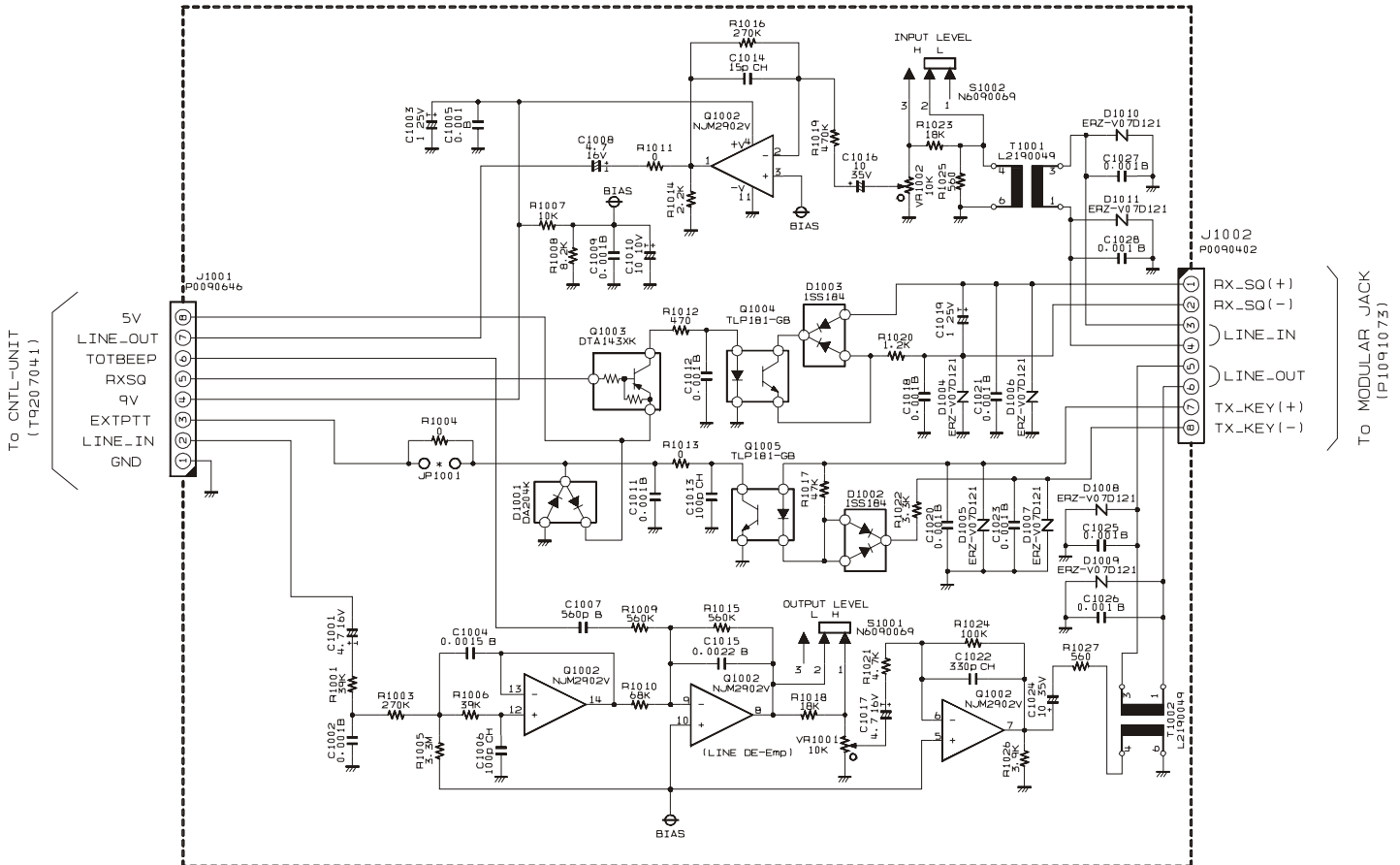
VERTEX STANDARD CO., LTD.
 4-8-8 Nakameguro, Meguro-Ku, Tokyo 153-8644, Japan

VERTEX STANDARD
US Headquarters
 10900 Walker Street, Cypress, CA 90630, U.S.A.

YAESU UK LTD.
 Unit 12, Sun Valley Business Park, Winnall Close
 Winchester, Hampshire, SO23 0LB, U.K.

VERTEX STANDARD HK LTD.
 Unit 5, 20/F., Seaview Centre, 139-141 Hoi Bun Road,
 Kwun Tong, Kowloon, Hong Kong

Circuit Diagram

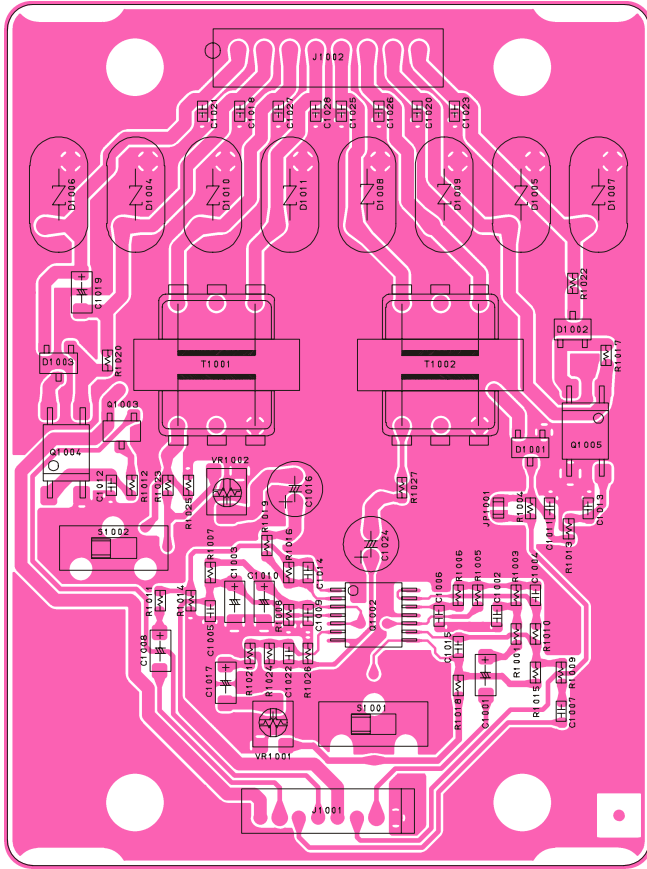


Packing List

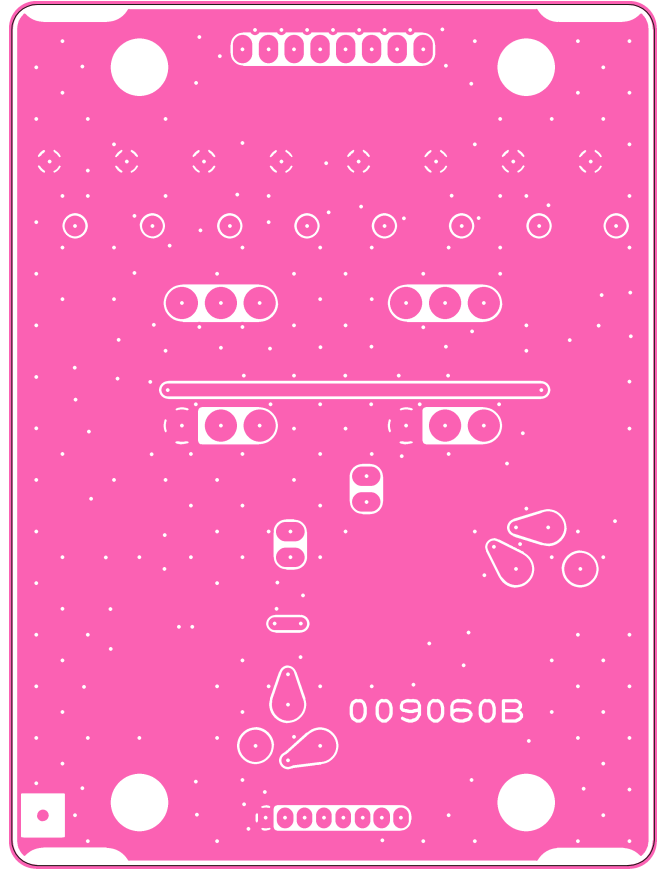
FIF-9 Interface Unit	1
Connector Assembly	
Holder (MOJ: RA0507700)	1
Holder (MJ: RA0181200)	1
Screw (M3x5NI: U20305002)	2
Connection Cable (T9207041A)	1
Stud Bolt (R6124610)	4
Screw (M3x5NI: U20305002)	6

FIF-9 Interface Unit Service Manual

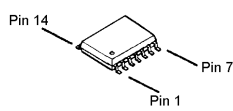
Parts Layout



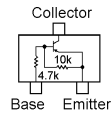
Side A



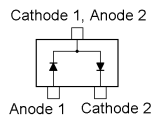
Side B



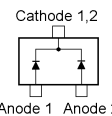
NJM2902V
(Q1002)



DTA143XK (33)
(Q1003)



DA204K (K)
(D1001)



1SS184 (B3)
(D1002, 1003)

FIF-9 Interface Unit Service Manual

Parts List

REF	DESCRIPTION	VALUE	V/W	TOL.	MFR'S DESIG	VXSTD P/N	VERS.	LOT	SIDE	LAY ADR
	Printed Circuit Board				AAC95X000	FR0090600				1-
C 1001	CHIP TA.CAP.	4.7uF	16V		TEMSVA1C475M-8R	K78120031				1-
C 1002	CHIP CAP.	0.001uF	50V	B	GRM39B102K50PT	K22174821				1-
C 1003	CHIP TA.CAP.	1uF	25V		TEMSVA1E105M-8R	K78140013				1-
C 1004	CHIP CAP.	0.0015uF	50V	B	GRM39B152M50PT	K22174811				1-
C 1005	CHIP CAP.	0.001uF	50V	B	GRM39B102K50PT	K22174821				1-
C 1006	CHIP CAP.	100pF	50V	CH	GRM39CH101J50PT	K22174235				1-
C 1007	CHIP CAP.	560pF	50V	B	ECUV1H561KBV	K22179611				1-
C 1008	CHIP TA.CAP.	4.7uF	16V		TEMSVA1C475M-8R	K78120031				1-
C 1009	CHIP CAP.	0.001uF	50V	B	GRM39B102K50PT	K22174821				1-
C 1010	CHIP TA.CAP.	10uF	10V		TEMSVA1A106M-8R	K78100028				1-
C 1011	CHIP CAP.	0.001uF	50V	B	GRM39B102K50PT	K22174821				1-
C 1012	CHIP CAP.	0.001uF	50V	B	GRM39B102K50PT	K22174821				1-
C 1013	CHIP CAP.	100pF	50V	CH	GRM39CH101J50PT	K22174235				1-
C 1014	CHIP CAP.	15pF	50V	CH	GRM39CH150J50PT	K22174215				1-
C 1015	CHIP CAP.	0.0022uF	50V	B	GRM39B222K50PT	K22174822				1-
C 1016	AL.ELECTRO.CAP.	10uF	35V		RC2-35V100MS-F1	K40169025				1-
C 1017	CHIP TA.CAP.	4.7uF	16V		TEMSVA1C475M-8R	K78120031				1-
C 1018	CHIP CAP.	0.001uF	50V	B	GRM39B102K50PT	K22174821				1-
C 1019	CHIP TA.CAP.	1uF	25V		TEMSVA1E105M-8R	K78140013				1-
C 1020	CHIP CAP.	0.001uF	50V	B	GRM39B102K50PT	K22174821				1-
C 1021	CHIP CAP.	0.001uF	50V	B	GRM39B102K50PT	K22174821				1-
C 1022	CHIP CAP.	330pF	50V	CH	GRM39CH331J50PT	K22174253				1-
C 1023	CHIP CAP.	0.001uF	50V	B	GRM39B102K50PT	K22174821				1-
C 1024	AL.ELECTRO.CAP.	10uF	35V		RC2-35V100MS-F1	K40169025				1-
C 1025	CHIP CAP.	0.001uF	50V	B	GRM39B102K50PT	K22174821				1-
C 1026	CHIP CAP.	0.001uF	50V	B	GRM39B102K50PT	K22174821				1-
C 1027	CHIP CAP.	0.001uF	50V	B	GRM39B102K50PT	K22174821				1-
C 1028	CHIP CAP.	0.001uF	50V	B	GRM39B102K50PT	K22174821				1-
D 1001	DIODE				DA204K T146	G2070388				1-
D 1002	DIODE				1SS184 TE85R	G2070009				1-
D 1003	DIODE				1SS184 TE85R	G2070009				1-
D 1004	SURGE ABSORBER				ERZ-V07D121	Q9000604				1-
D 1005	SURGE ABSORBER				ERZ-V07D121	Q9000604				1-
D 1006	SURGE ABSORBER				ERZ-V07D121	Q9000604				1-
D 1007	SURGE ABSORBER				ERZ-V07D121	Q9000604				1-
D 1008	SURGE ABSORBER				ERZ-V07D121	Q9000604				1-
D 1009	SURGE ABSORBER				ERZ-V07D121	Q9000604				1-
D 1010	SURGE ABSORBER				ERZ-V07D121	Q9000604				1-
D 1011	SURGE ABSORBER				ERZ-V07D121	Q9000604				1-
J 1001	CONNECTOR				IL-Y-8P-S15T2-EF	P0090646				1-
J 1002	CONNECTOR				B8B-PH-K-S	P0090402				1-
Q 1002	IC				NJM2902V-TE1	G1091679				1-
Q 1003	TRANSISTOR				DTA143XK T146	G3070032				1-
Q 1004	PHOTO COUPLER				TLP181-GB(TPR)	G0090021				1-
Q 1005	PHOTO COUPLER				TLP181-GB(TPR)	G0090021				1-
R 1001	CHIP RES.	39k	1/16W	5%	RMC1/16 393JATP	J24185393				1-
R 1003	CHIP RES.	270k	1/16W	5%	RMC1/16 274JATP	J24185274				1-
R 1004	CHIP RES.	0	1/16W	5%	RMC1/16 000JATP	J24185000				1-
R 1005	CHIP RES.	3.3M	1/16W	5%	RMC1/16 335JATP	J24185335				1-
R 1006	CHIP RES.	39k	1/16W	5%	RMC1/16 393JATP	J24185393				1-
R 1007	CHIP RES.	10k	1/16W	5%	RMC1/16 103JATP	J24185103				1-
R 1008	CHIP RES.	8.2k	1/16W	5%	RMC1/16 822JATP	J24185822				1-
R 1009	CHIP RES.	560k	1/16W	5%	RMC1/16 564JATP	J24185564				1-
R 1010	CHIP RES.	68k	1/16W	5%	RMC1/16 683JATP	J24185683				1-
R 1011	CHIP RES.	0	1/16W	5%	RMC1/16 000JATP	J24185000				1-
R 1012	CHIP RES.	470	1/16W	5%	RMC1/16 471JATP	J24185471				1-
R 1013	CHIP RES.	0	1/16W	5%	RMC1/16 000JATP	J24185000				1-
R 1014	CHIP RES.	2.2k	1/16W	5%	RMC1/16 222JATP	J24185222				1-
R 1015	CHIP RES.	560k	1/16W	5%	RMC1/16 564JATP	J24185564				1-
R 1016	CHIP RES.	270k	1/16W	5%	RMC1/16 274JATP	J24185274				1-
R 1017	CHIP RES.	47k	1/16W	5%	RMC1/16 473JATP	J24185473				1-
R 1018	CHIP RES.	18k	1/16W	5%	RMC1/16 183JATP	J24185183				1-
R 1019	CHIP RES.	470k	1/16W	5%	RMC1/16 474JATP	J24185474				1-
R 1020	CHIP RES.	1.2k	1/16W	5%	RMC1/16 122JATP	J24185122				1-
R 1021	CHIP RES.	4.7k	1/16W	5%	RMC1/16 472JATP	J24185472				1-
R 1022	CHIP RES.	3.3k	1/16W	5%	RMC1/16 332JATP	J24185332				1-
R 1023	CHIP RES.	18k	1/16W	5%	RMC1/16 183JATP	J24185183				1-
R 1024	CHIP RES.	100k	1/16W	5%	RMC1/16 104JATP	J24185104				1-
R 1025	CHIP RES.	560	1/16W	5%	RMC1/16 561JATP	J24185561				1-
R 1026	CHIP RES.	3.9k	1/16W	5%	RMC1/16 392JATP	J24185392				1-
R 1027	CHIP RES.	560	1/16W	5%	RMC1/16 561JATP	J24185561				1-
S 1001	SLIDE SWITCH				SSSS21	N6090069				1-

FIF-9 Interface Unit Service Manual

Parts List

REF	DESCRIPTION	VALUE	V/W	TOL.	MFR'S DESIG	VXSTD P/N	VERS.	LOT	SIDE	LAY ADR
S 1002	SLIDE SWITCH				SSSS21	N6090069		1-		
T 1001	AF TRANS.				12T01	L2190049		1-		
T 1002	AF TRANS.				12T01	L2190049		1-		
VR1001	POT.	10k			EVN-5ESX50B14	J51811103		1-		
VR1002	POT.	10k			EVN-5ESX50B14	J51811103		1-		
J 0001	CONNECTOR				NTC-823SKN8-460-PHR	P1091073		1-		

FIF-9 Interface Unit Service Manual

Parts List



Copyright 2004
VERTEX STANDARD CO., LTD.
All rights reserved

No portion of this manual
may be reproduced without
the permission of
VERTEX STANDARD CO., LTD.