



TRBOnet™ Watch: Monitoring and Analytics

Make the most of your radio network

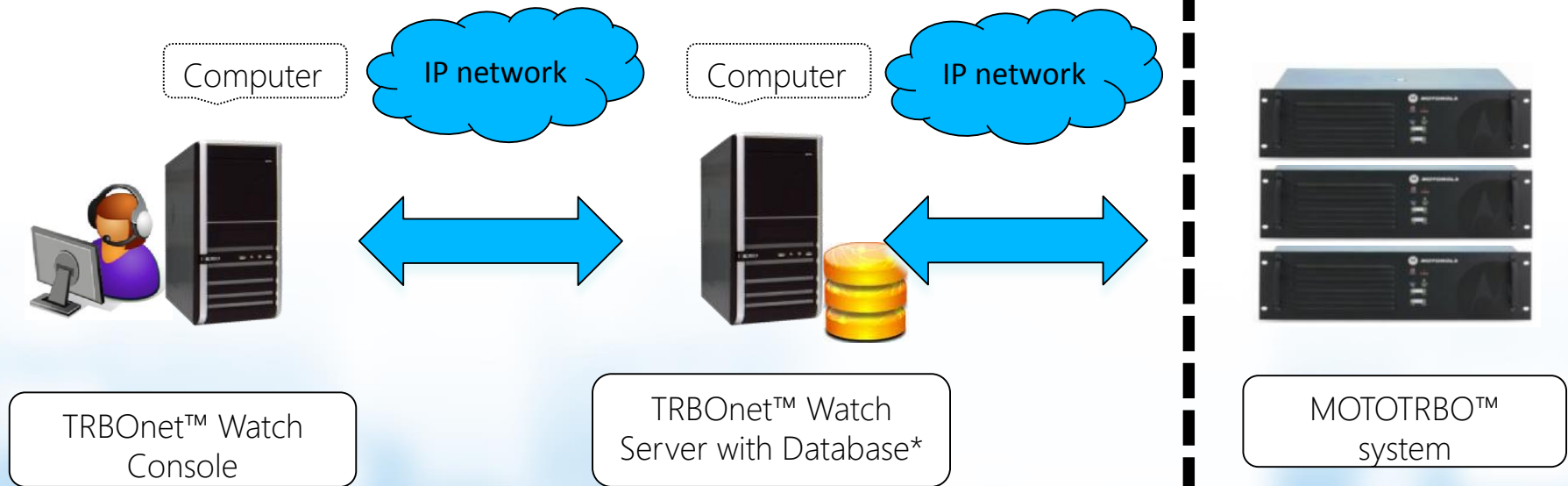


TRBOnet™ Watch

- MOTOTRBO™ protocol analyzer
- Support for all MOTOTRBO™ systems
- Multiple systems monitoring
- Topology problem detection
- Channel usage monitoring
- Hardware failure alarms
- Real-time capture
- Network statistics
- No NAI data required



TRBOnet™ Architecture: Client-Server Software



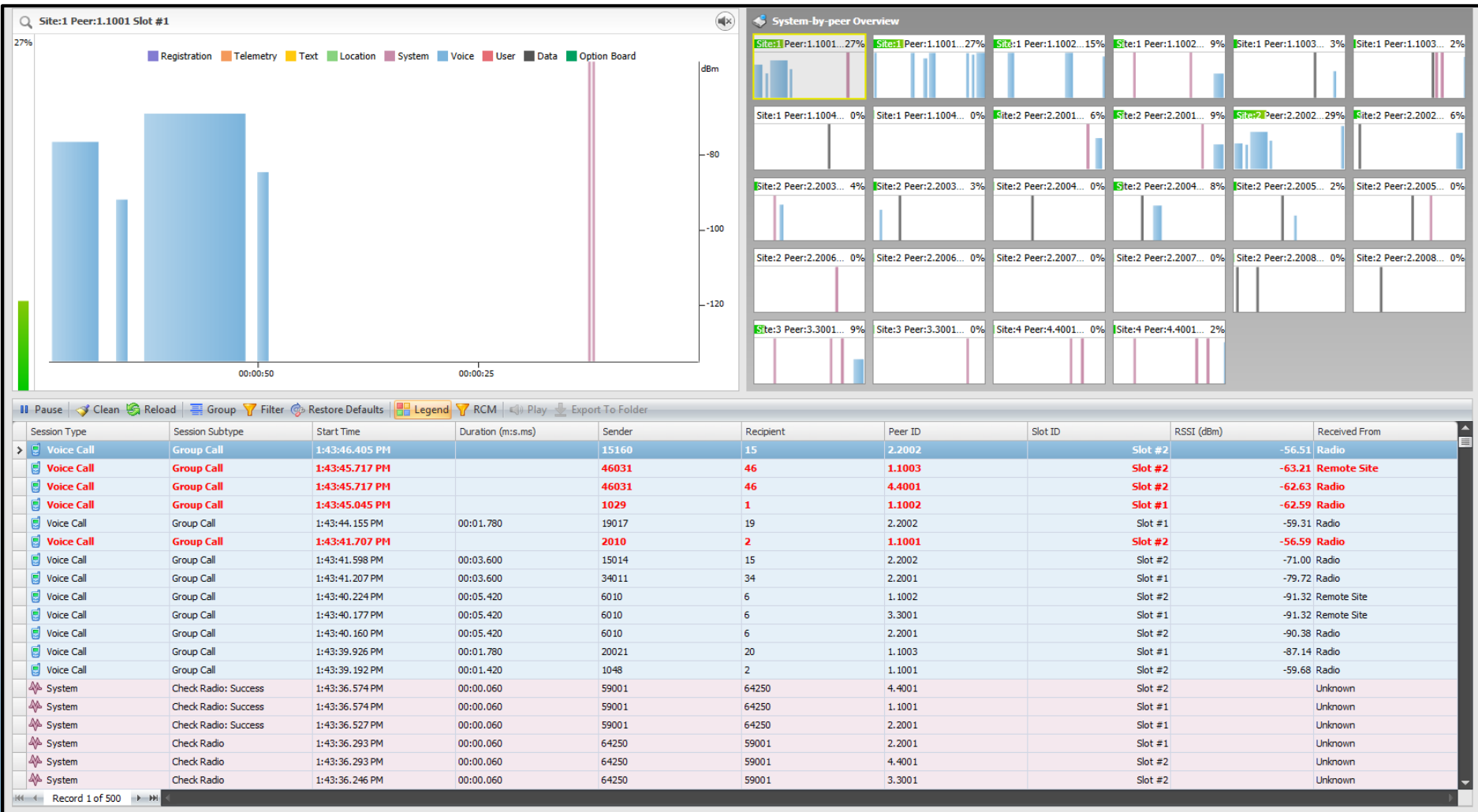
* Microsoft SQL Server Express (free edition)

Features: Real-Time Monitoring

- All traffic by slots
- Traffic information: voice, ARS, text, GPS etc.
- Traffic log with advanced filters
- Channel usage statistics
- Slot listening
- Signal strength



Real-Time Monitoring Interface



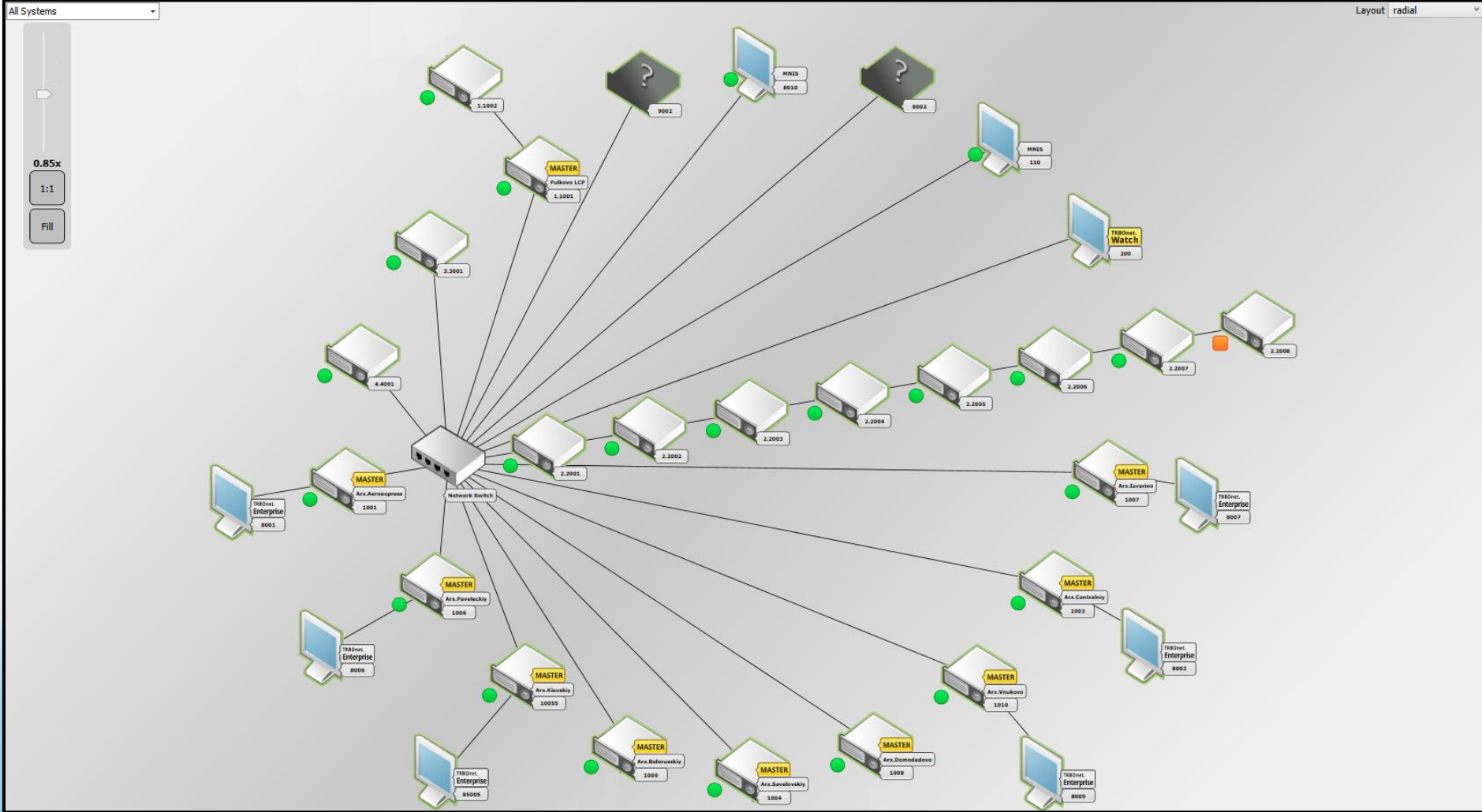
Session Type	Session Subtype	Start Time	Duration (m.s.ms)	Sender	Recipient	Peer ID	Slot ID	RSSI (dBm)	Received From
Voice Call	Group Call	1:43:46.405 PM		15160	15	2.2002	Slot #2	-56.51	Radio
Voice Call	Group Call	1:43:45.717 PM		46031	46	1.1003	Slot #2	-63.21	Remote Site
Voice Call	Group Call	1:43:45.717 PM		46031	46	4.4001	Slot #2	-62.63	Radio
Voice Call	Group Call	1:43:45.045 PM		1029	1	1.1002	Slot #1	-62.59	Radio
Voice Call	Group Call	1:43:44.155 PM	00:01.780	19017	19	2.2002	Slot #1	-59.31	Radio
Voice Call	Group Call	1:43:41.707 PM		2010	2	1.1001	Slot #2	-56.59	Radio
Voice Call	Group Call	1:43:41.598 PM	00:03.600	15014	15	2.2002	Slot #2	-71.00	Radio
Voice Call	Group Call	1:43:41.207 PM	00:03.600	34011	34	2.2001	Slot #1	-79.72	Radio
Voice Call	Group Call	1:43:40.224 PM	00:05.420	6010	6	1.1002	Slot #2	-91.32	Remote Site
Voice Call	Group Call	1:43:40.177 PM	00:05.420	6010	6	3.3001	Slot #1	-91.32	Remote Site
Voice Call	Group Call	1:43:40.160 PM	00:05.420	6010	6	2.2001	Slot #2	-90.38	Radio
Voice Call	Group Call	1:43:39.926 PM	00:01.780	20021	20	1.1003	Slot #1	-87.14	Radio
Voice Call	Group Call	1:43:39.192 PM	00:01.420	1048	2	1.1001	Slot #2	-59.68	Radio
System	Check Radio: Success	1:43:36.574 PM	00:00.060	59001	64250	4.4001	Slot #2		Unknown
System	Check Radio: Success	1:43:36.574 PM	00:00.060	59001	64250	1.1001	Slot #1		Unknown
System	Check Radio: Success	1:43:36.527 PM	00:00.060	59001	64250	2.2001	Slot #1		Unknown
System	Check Radio	1:43:36.293 PM	00:00.060	64250	59001	2.2001	Slot #1		Unknown
System	Check Radio	1:43:36.293 PM	00:00.060	64250	59001	4.4001	Slot #2		Unknown
System	Check Radio	1:43:36.246 PM	00:00.060	64250	59001	3.3001	Slot #2		Unknown

Features: Topology & Diagnostics

- Systems of any size and complexity
- LE ID for all components of the system
- Remote control: enable/disable, channel change
- Detailed information on network connections
- Repeater health status and alarms
- Failure point detection
- Repeater uptime
- On/off states
- Different display modes



Topology Interface



Features: Reports & Analysis

- Deep inspection: multiple reports, powerful filters
- Easy data visualization: bar, pie and line charts
- Output export to popular formats
- Channel usage: voice and data
- Bottleneck analysis
- Alarms and blackouts
- RSSI level map
- User activity
- Quick report filters

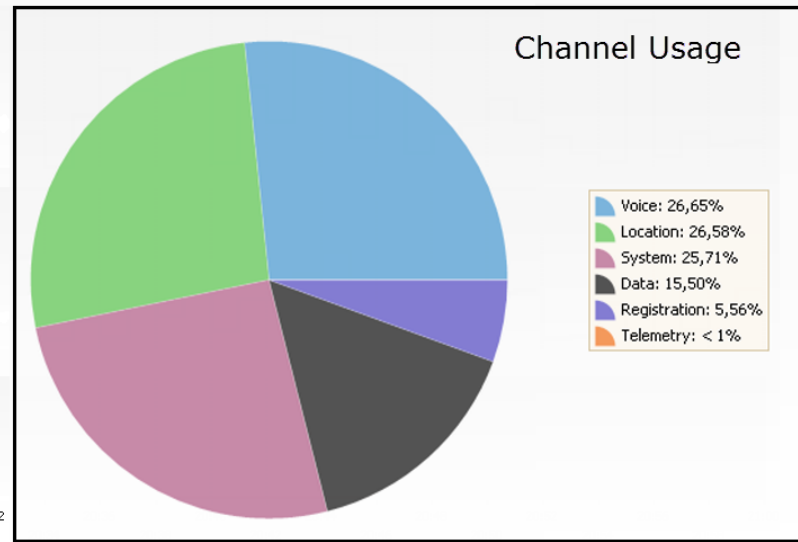
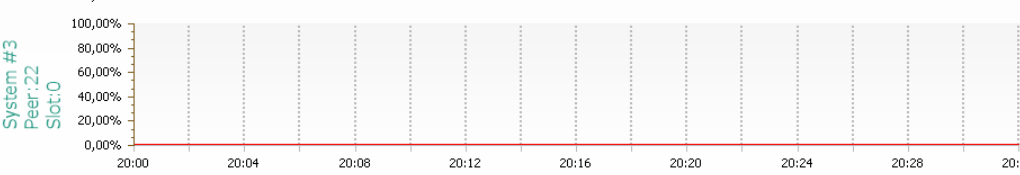
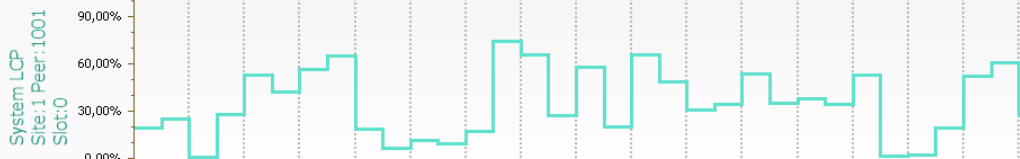
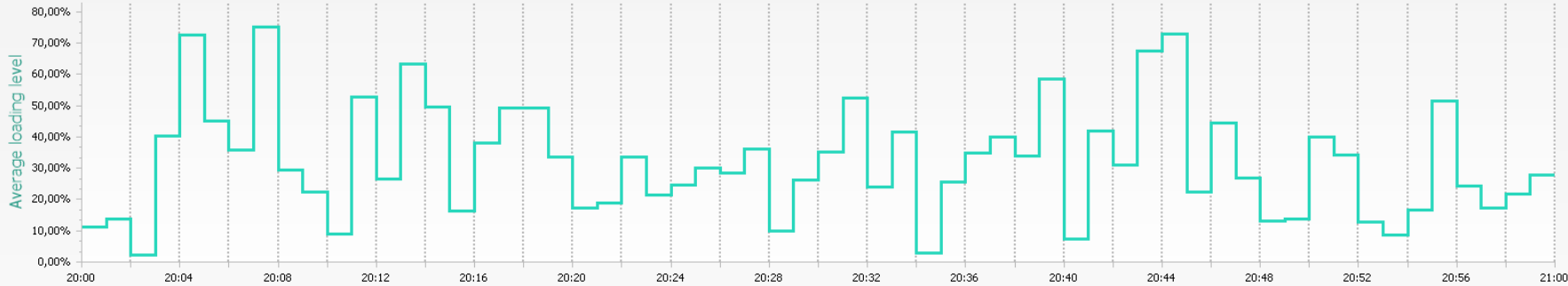


Reports: Network Usage

Multi-channel mode

Average and individual loading level indicators of the channels [Print](#) [Export](#) 11.03.2015 20:00:00 - 20:59:59 (Minute)

Load No repeater connection



Reports: Coverage Map



SNMP Integration

- Trap notifications (RDAC alarms, system events etc.) for SNMP consoles
- Radio system configuration and trap log available via polling
- Support for SNMPv2 and SNMPv3



SNMP Interface

TRBOnet.Watch v2.2 Configuration

Configuration

- Service
- Database
- Network
- Advanced settings
- MOTOTRBO
 - IPSC UHF NEW
 - Privacy
 - Data persistence
 - Peers
 - Connect PLUS
 - LCP
 - Capacity PLUS
 - Privacy
 - Data persistence
 - Peers
 - SNMP**
 - License

SNMP

System Parameters

sysDescr: TRBOnet.Watch 2.0.0.191

sysObjectID: 1.3.6.1.4.1.19547.1.1

sysContact: http://trbonet.com/contacts.aspx?product=TRBOnet.Watch

sysName: TRBOnet.Watch SNMP Agent

sysLocation: Default location

Engine ID

80000AD0431AF108

SNMPv3 User

User: john.m

Auth Password: john.m

Privacy Password: john.m

Auth Protocol: Md5

Privacy Protocol: Des

SNMP Agent

Enabled

SNMPv3 Only

Notification

Send:

SNMP

Authentication

To: 255.255.255.255

Version: SNMPv2

Set Defaults

Apply OK Cancel

Supported Systems

- Single Repeater and IPSC
- Capacity Plus
- Linked Capacity Plus
- Connect Plus (XRT is required)
- New Generation Repeater



Support

- Dedicated support team
- Guaranteed response time: two workdays
- Free updates and support first 12 months
- Low annual subscription costs

skype: trbonet

email: info@trbonet.com

http: www.trbonet.com





TRBOnet
Digital Technologies



**THANK
YOU!**



www.TRBO.net.com